

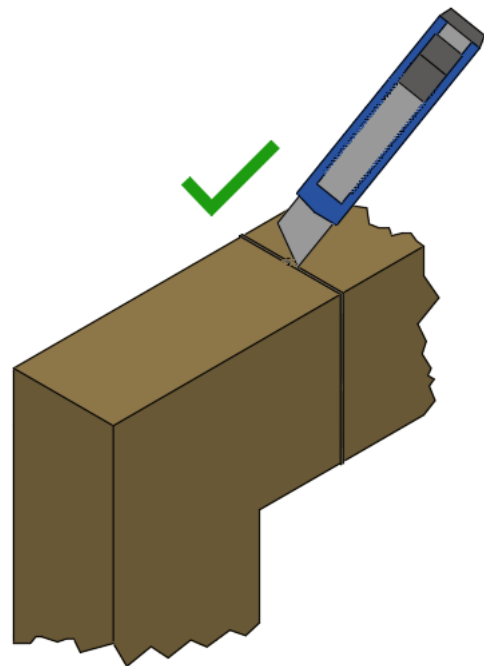
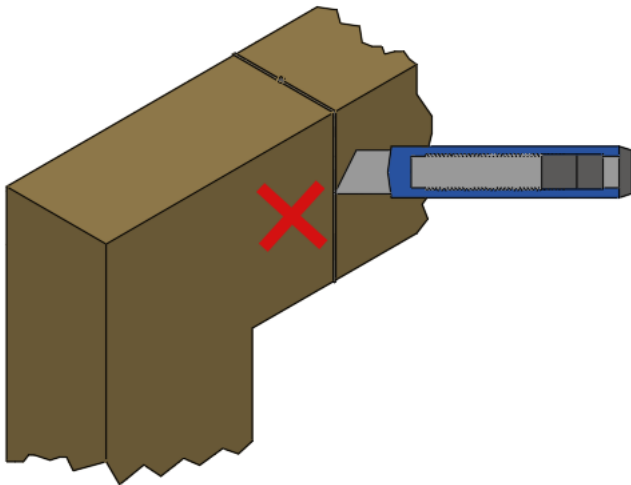


H-MULL INSTALLATION GUIDE

This guide is officially approved by AEROFRAME INC. Installers are expected to follow its instructions carefully. AEROFRAME is not responsible for any errors or omissions made by installers.

REMOVE PACKAGING AND INSPECT H-MULL

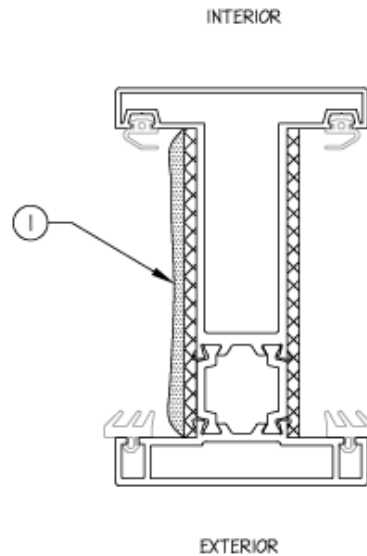
1. Place H-Mull on clean tables or sawhorses, ensuring they are free of debris that could scratch the paint.
2. Use an Olfa knife to cut the packaging.
3. Remove corner covers, shipping blocks, and cardboard wrap.



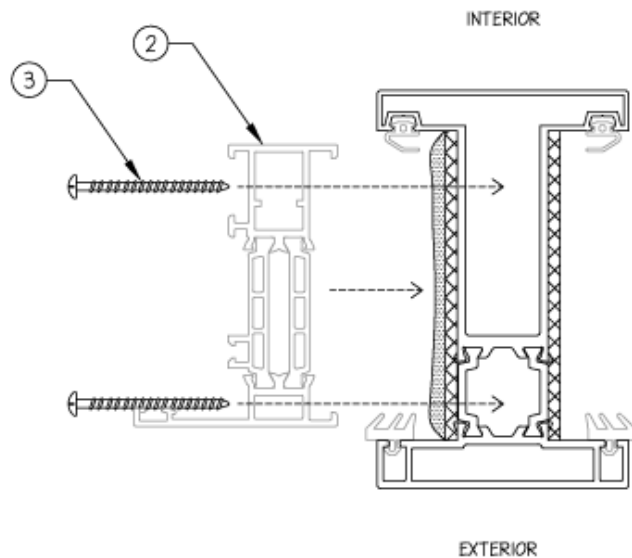
4. Confirm that the product type and sizes match the confirmation drawings.
5. Check for damage such as cracks or paint scratches. Document any damage with photos before installation.

INSTALL H-MULL

1. Apply structural silicone (DOW 795) along the inside face of the profile, full height and depth.



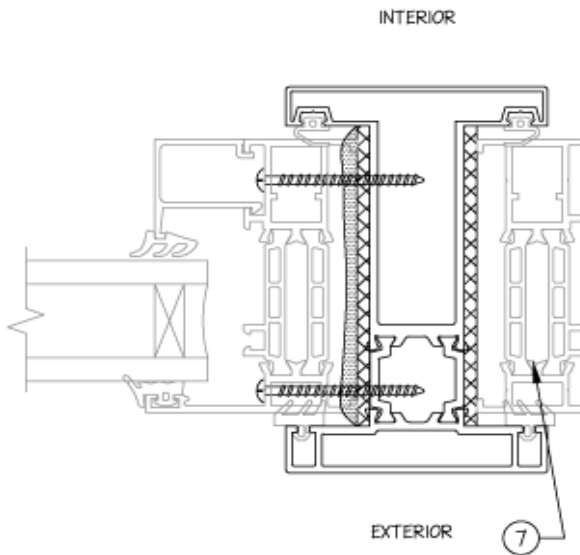
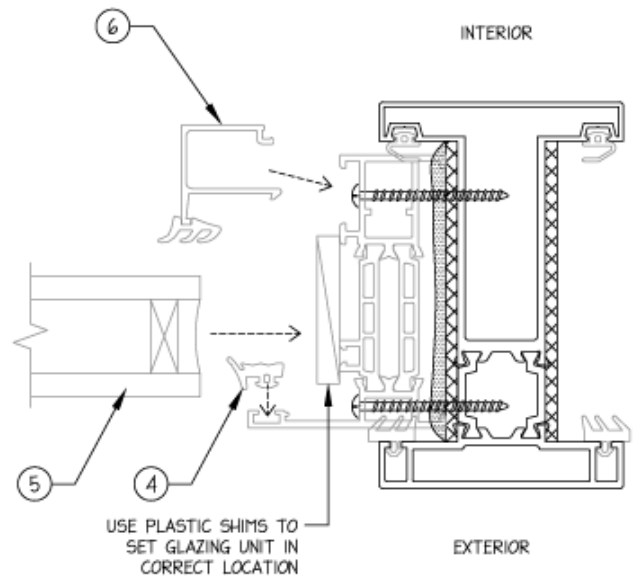
2. Place the fixed frame into the H-Mull profile. Press the frame firmly into the silicone.
3. Fasten the frame to the H-Mull with #10 2" Tek screws at 12" O.C.



CONTINUED

INSTALL H-MULL

4. Insert the face gasket into the fixed frame.
5. Install the glazing unit.
6. Install the glazing stop to hold glass in place.

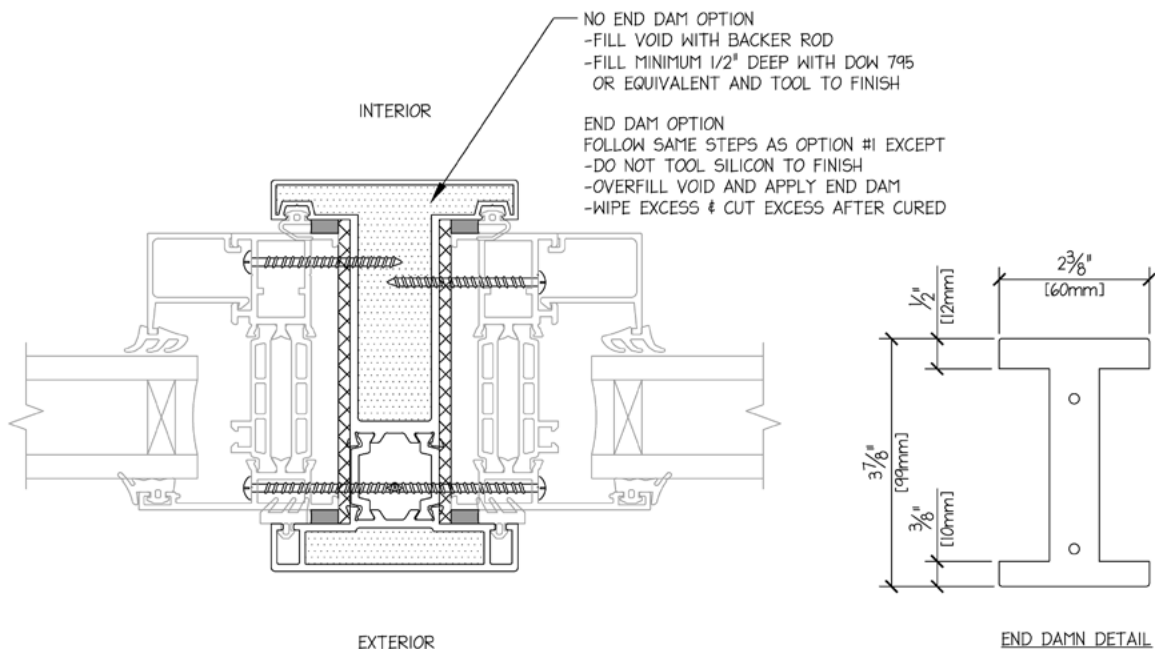


7. Install the window on the opposite side of the H-Mull using the same method.

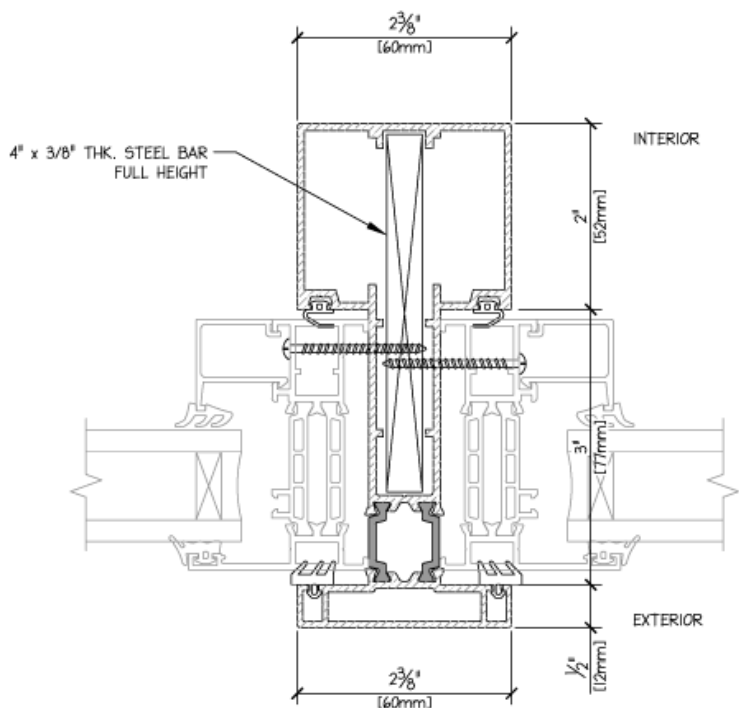
Install Note

See AEROFRAME Glazing Specifications document for full glazing unit install procedure.

H-MULL END FINISHING DETAIL



H-MULL TUBE BACK WITH STEEL SLEEVE SLOT



CONTACT

aeroframe.com
1-877-323-7263

US Office
Suite 110 – 22745 29th Drive SE,
Bothell, WA 98021
USA

Canada Office
Jameson House, 838 W Hastings St #600,
Vancouver, BC V6C 0A6
Canada