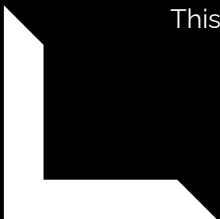


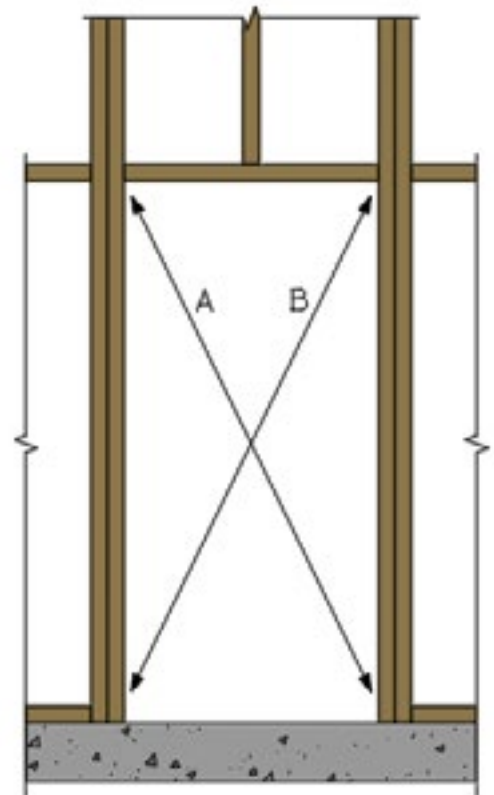
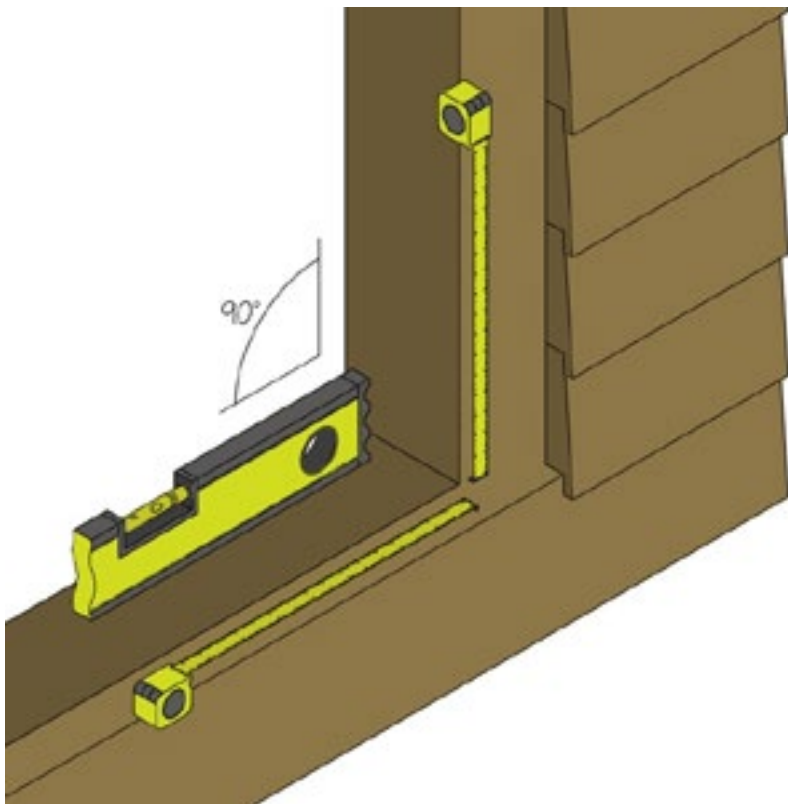
SWING DOOR INSTALLATION GUIDE

This guide is officially approved by AEROFRAME INC. Installers are expected to follow its instructions carefully. AEROFRAME is not responsible for any errors or omissions made by installers.



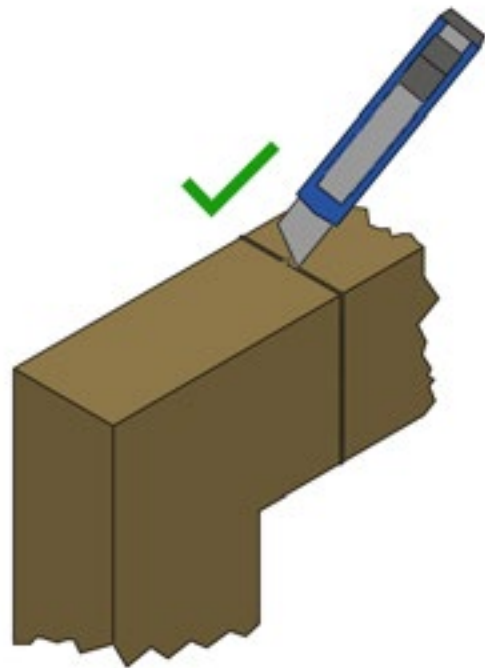
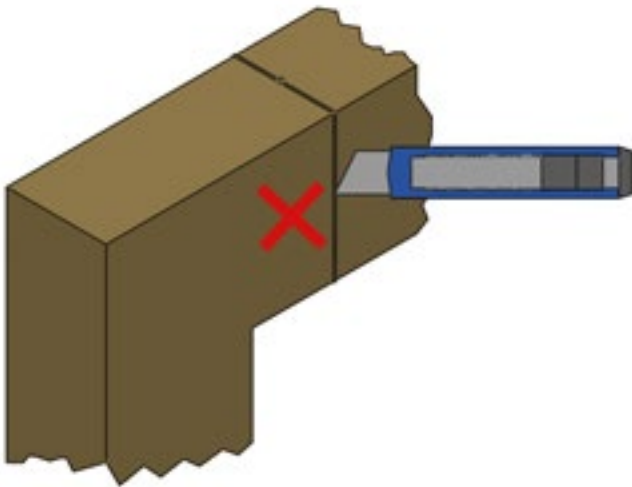
INSPECT ROUGH OPENING

- A. Confirm that the rough opening matches the final shop drawings.
- B. Check the rough opening and measure for square, plumb, and correct sizing. The maximum deviation should not exceed 1/4".
- C. Verify doors alignment and elevation for adjacent openings (both horizontal and vertical).
- D. Ensure the exterior face of the sheathing is flat and free of any twists.
- E. The sill rough opening must not be crowned or sagging.
- F. The bottom of the sill must be level and should not slope toward the interior.
- G. Note for inswing door sill – Sill recess not required, shim up to allow for door leaf to swing over finished floor. *Standard gap should be minimum 5/8", this may or may not allow for door mat / carpet.
- H. Note for outswing door sill – Sill may need to be recessed into wood blocking or concrete. Ensure there is room behind sill frame to allow for attachment angle. See sketch
- I. The wood frame opening must be dry, undamaged, and free of debris.



REMOVE PACKAGING AND INSPECTING DOOR

- A. Place door frame on clean tables or sawhorses, ensuring they are free of debris that could scratch the paint.
- B. Use an Olfa knife to cut the door packaging (cardboard). Cut along the outside jamb face, not along the door face.
- C. Remove corner covers, shipping blocks, and cardboard wrap.

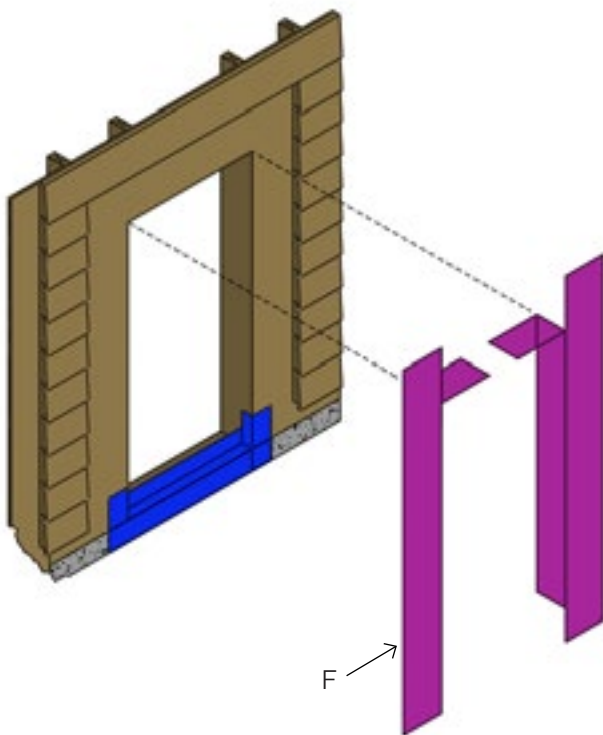
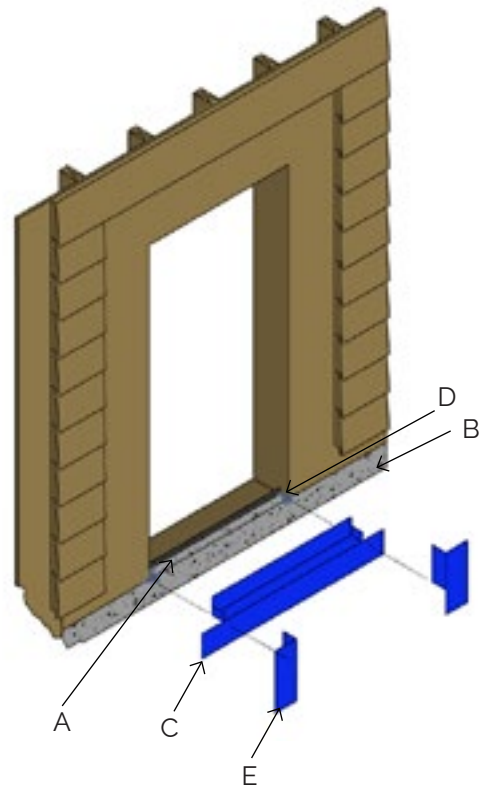


- D. Confirm that the product type and sizes match the confirmation drawings.
- E. Check for damage such as cracked frames or paint scratches. Document any damage with photos before installation.

F. **IMPORTANT**
Leave any protective film in place until installation is complete. The film must be removed immediately after installation to prevent UV degradation, which could cause it to adhere to the aluminum frame.

PREPARE ROUGH OPENING

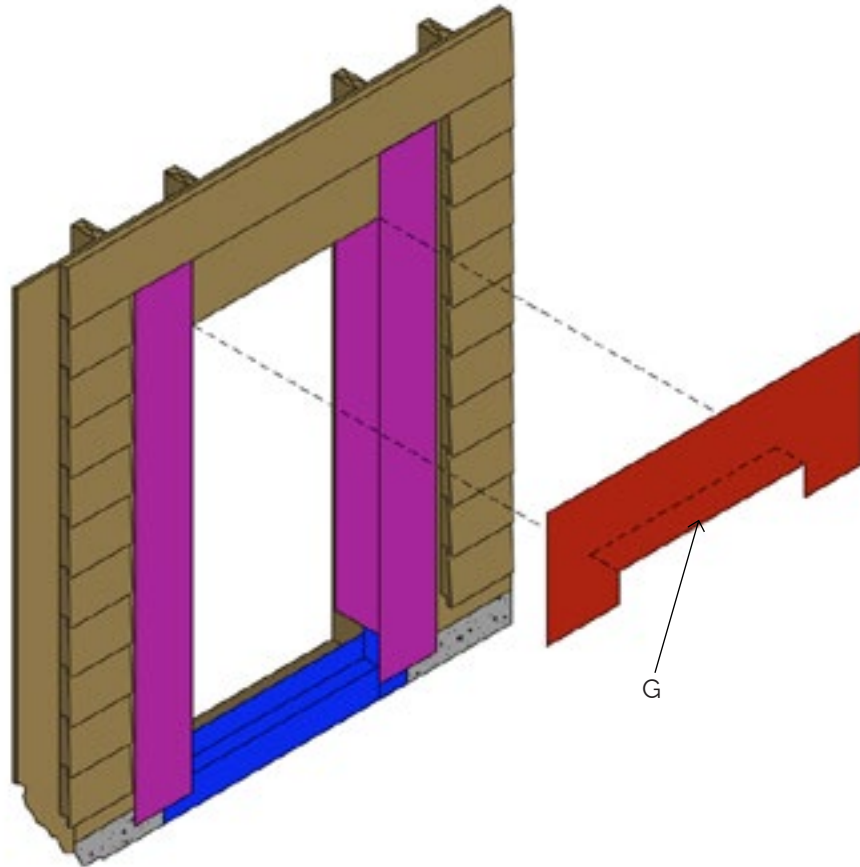
- A. Fasten a 1" x 1" aluminum angle down to wood or concrete. Measure where the back of the door threshold will be, then place the angle at that location with the face toward the frame. See sketch.
- B. Use a minimum 9" strip of foil face membrane (Protecto Seal 45). Apply primer 4" down the face of the rough opening, continuing up to the face of the aluminum angle.
- C. Apply the foil face membrane on the door sill opening, extending 4" down the face and past the top of the L-angle. Fold over or cut any excess membrane.



- D. Apply a wedge-shaped JS500 gusset at the rough opening sill corners. Ensure the surface is primed first before installation.
- E. Prime the surface first, then install the foil face membrane 6" up the door jambs with 4" downturns. (See picture) rough opening. (Refer to picture.)
- F. Apply a single ply of WRB/AB (VP100) 6" wide to the door jamb rough opening. (See picture.)

CONTINUED

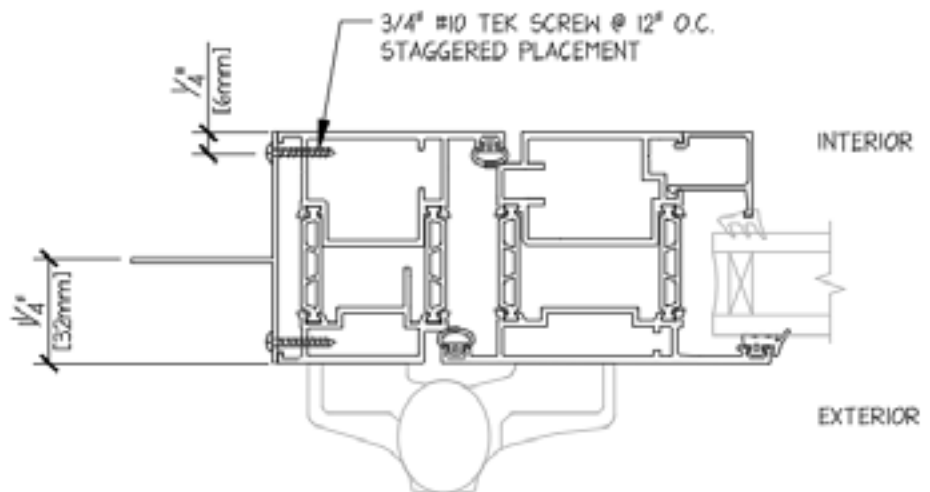
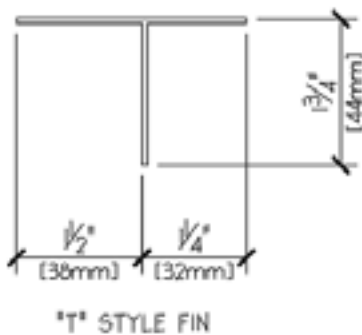
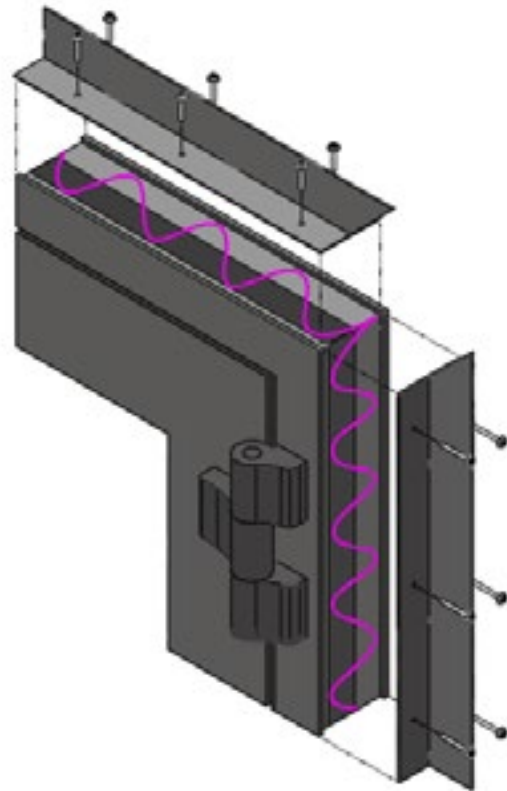
PREPARE ROUGH OPENING



- G. Apply a single ply of WRB/AB (VP100) to the head of the rough opening. Make a relief cut and tuck the WRB/AB (VP100) flap under the head of the opening.

PREPARE EXISTING DOOR FRAME

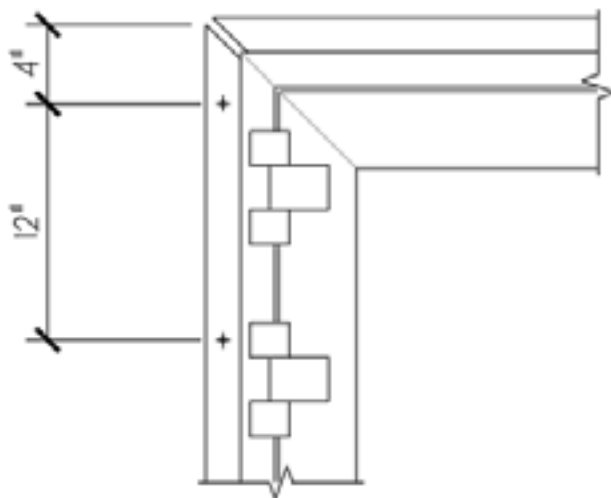
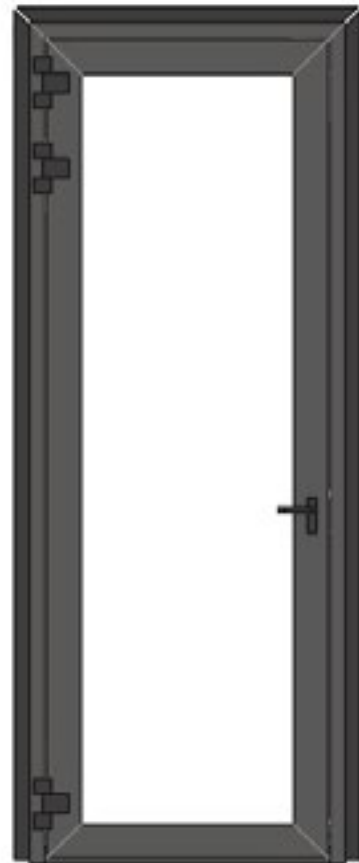
- A. Apply Dow 795 (or an equivalent sealant) in a squiggled bead along the outer perimeter of the frame.
- B. Fasten the nail fin using #10 3/4" Tek screws at 12" o.c. starting 4" from each edge. . Ensure that the nail fin leg is 1 1/4" from the exterior face of the door.



CONTINUED

PREPARE EXISTING DOOR FRAME

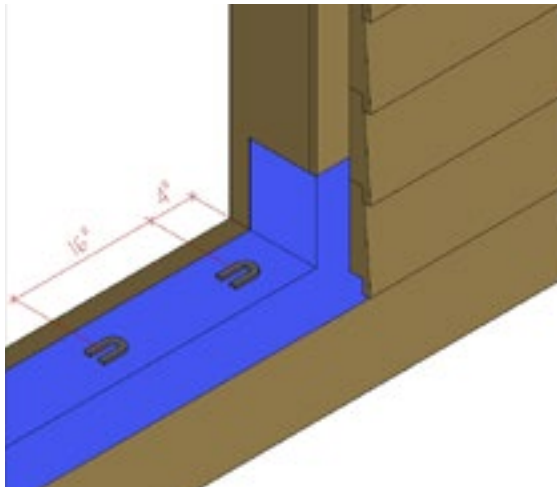
- C. For head flashing, do not predrill holes for nails or use screws to fasten, install header clips to allow for deflection.



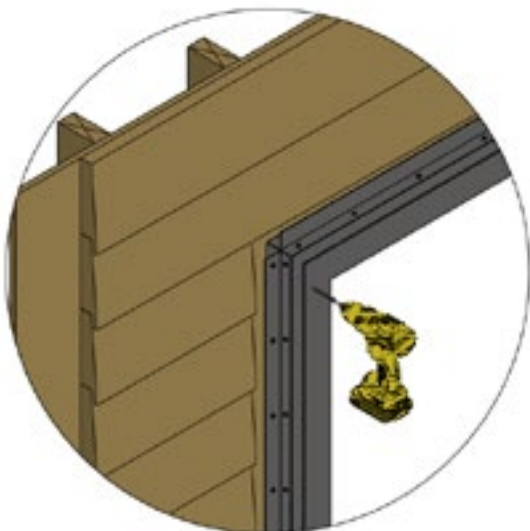
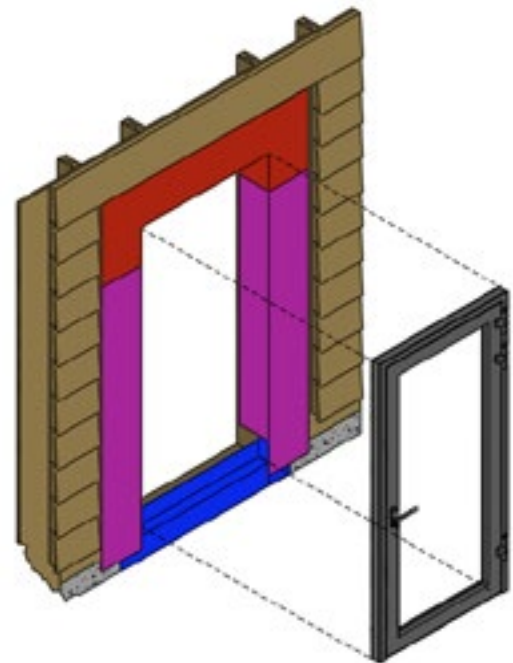
- D. For Jambs, predrill $\frac{1}{4}$ " dia holes every 12", starting 4" from both edges.

INSTALL DOOR

- A. Place non-compressible load-bearing shims every 16" and 4" from each jamb edge. Ensure sill is level with correct elevation.



- B. If there is sill flashing to be installed under the door, place on top of shims and place 1/8" shims on top of flashing and under door to ensure gap for drainage.
- C. Insert the door into the opening and ensure it is centered.

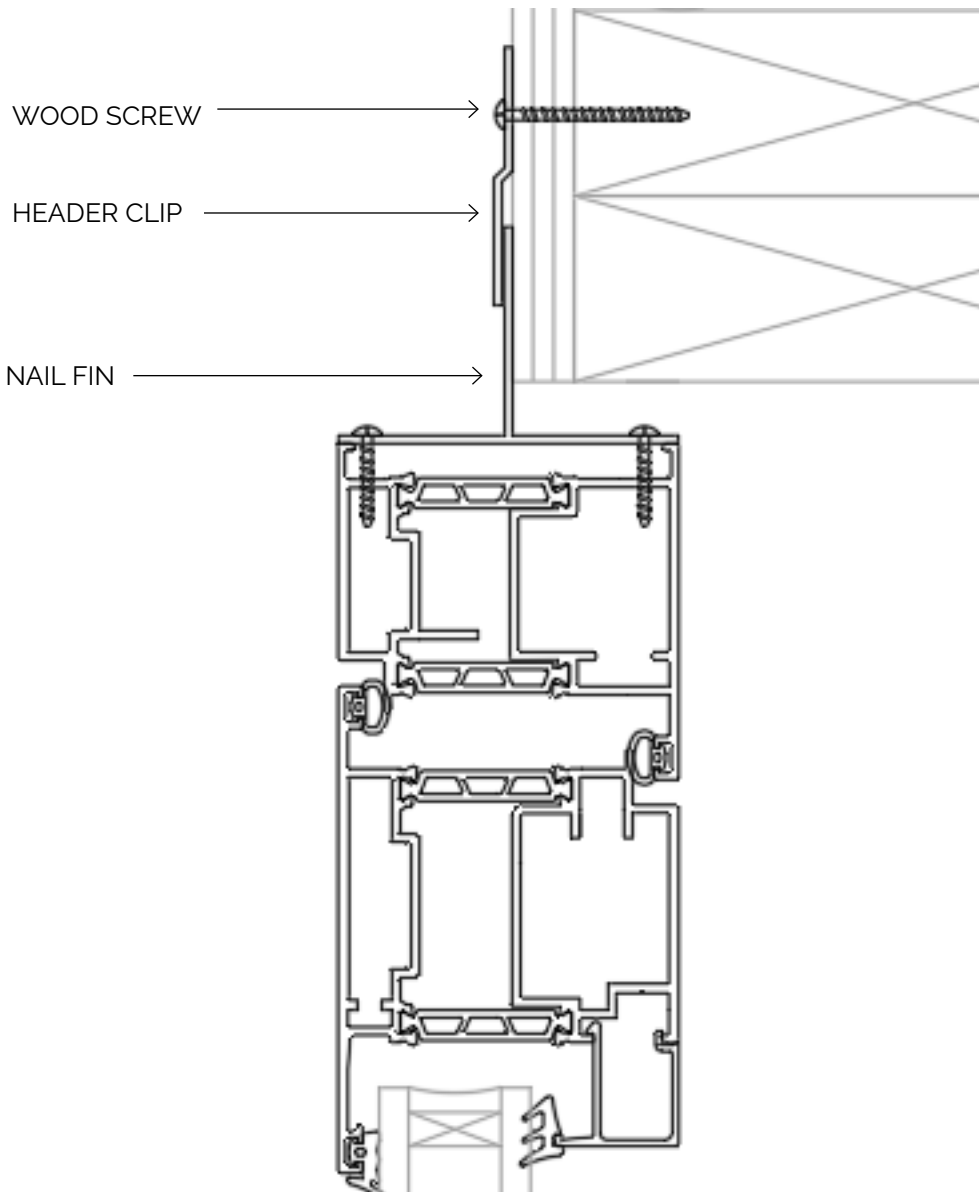


- D. Plumb and level the frame by shimming behind the nail fin at screw points. Use horseshoe shims around screws.
- E. Improper shim placement may result in bowing at the bottom of the frame.

CONTINUED

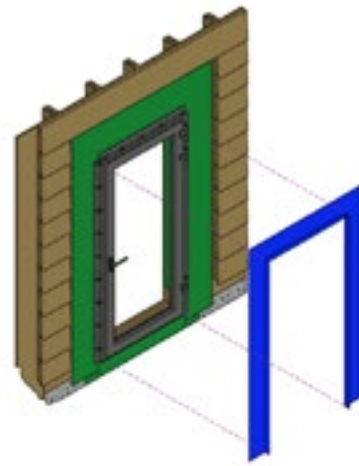
INSTALL DOOR

- F. Do not add screws to the head of the door—install header clips instead.



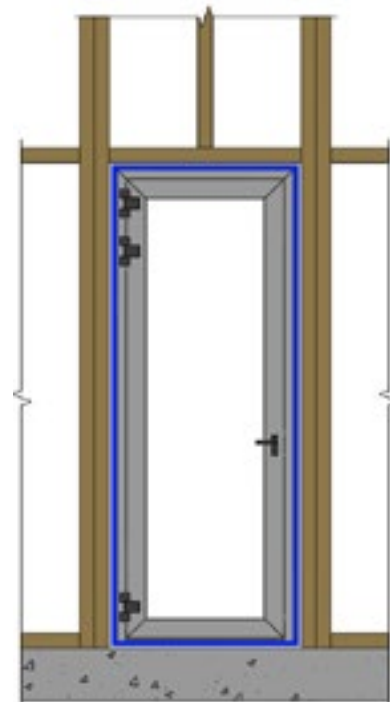
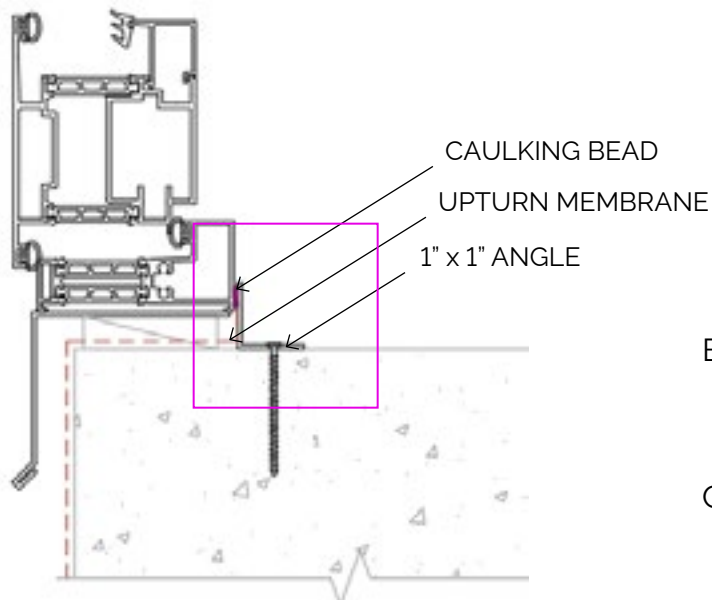
TIE-IN

- A. Prime the exterior surface of the nail fin and building wrap, then apply a 6" VP100 membrane. The VP100 must cover all screw holes and overlap the building wrap.



INTERIOR SEALANT INSTRUCTIONS

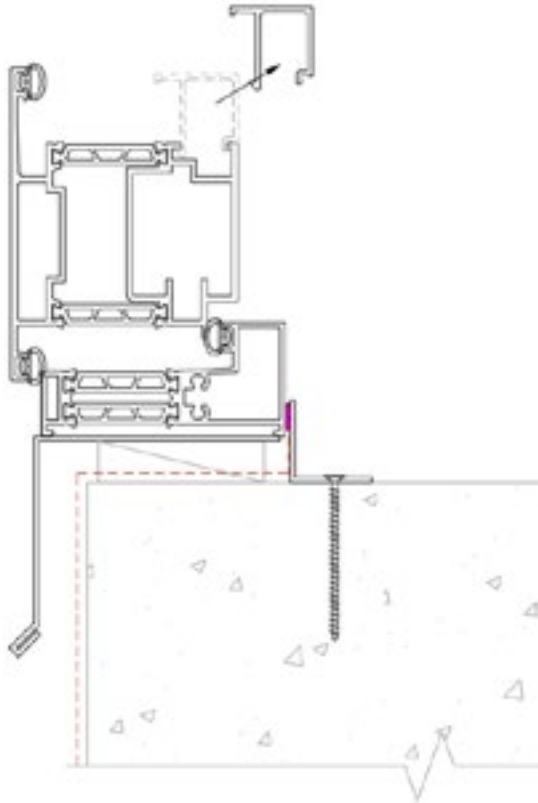
- A. Add continuous backer rod to the jambs and head. Use a high-quality, low-odor interior sealant such as DOW 795 or Spectrum 2 for residential applications.



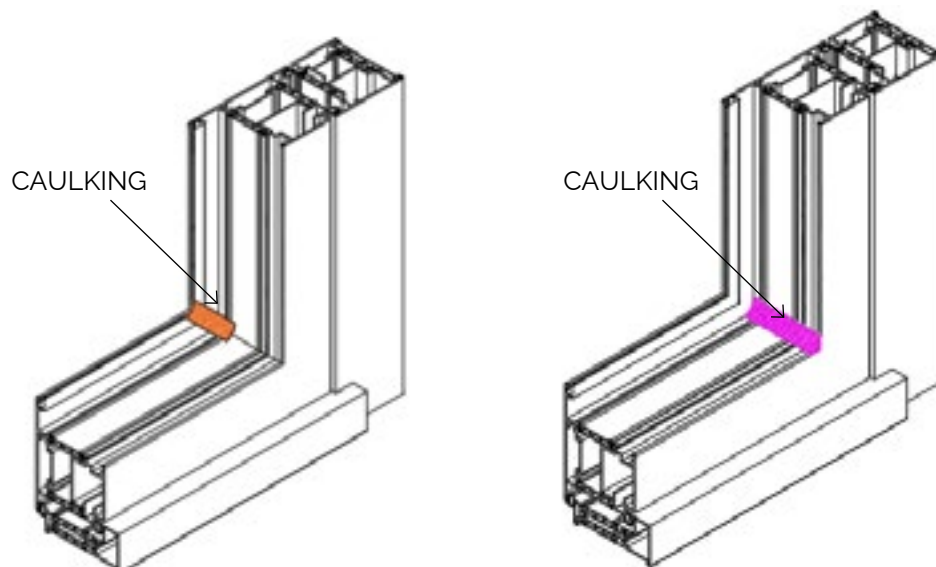
- B. Apply a continuous bead between the frame and opening along all 4 sides of the door.
- C. Tool the silicone to ensure it is flush with the interior face.

GLAZE SWING DOORS

A. Remove the glass stop from the frame.



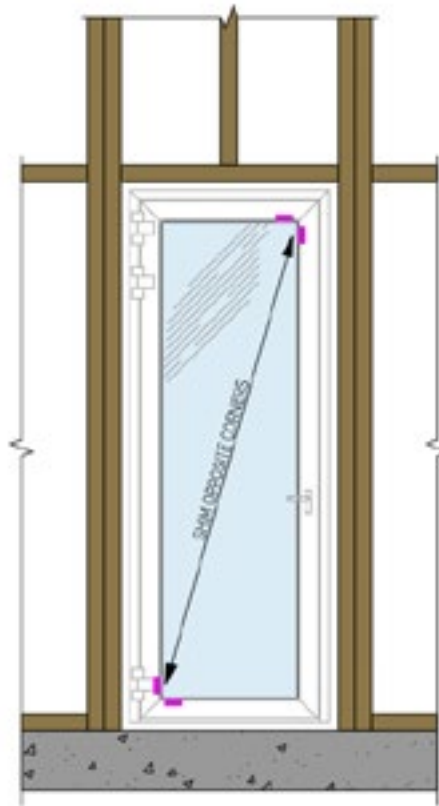
B. Apply a smear bead in the bottom cavity corners along the entire depth of the frame.



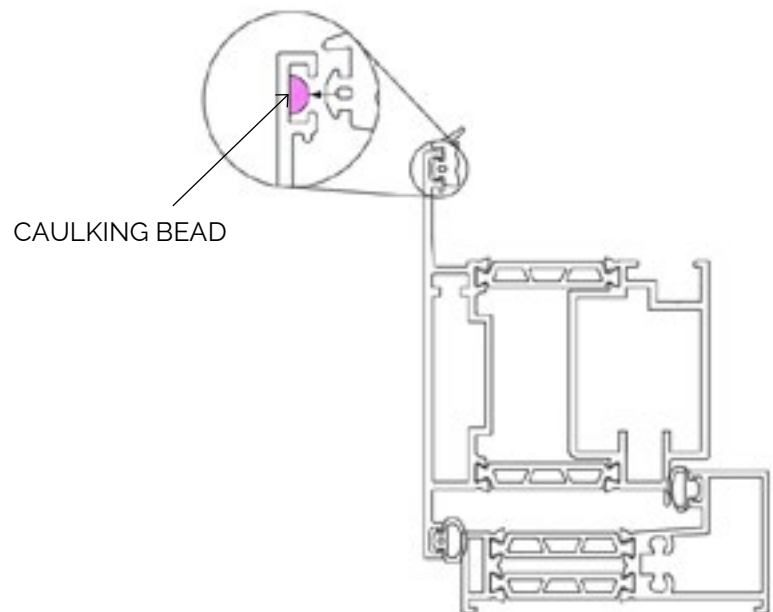
CONTINUED

GLAZE SWING DOORS

- C. Shim opposite corners in a "heel & toe" glazing method to ensure the door functions correctly. Make sure the door is operating properly before adding a backer rod and caulking.

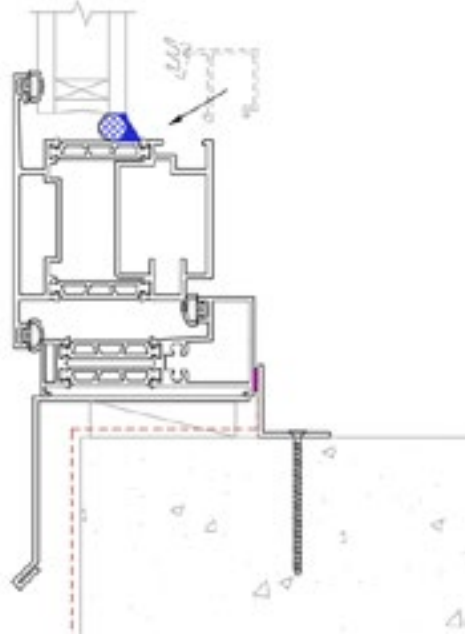


- D. Add a small dab of caulking behind the facing gasket at the corners to prevent future movement.

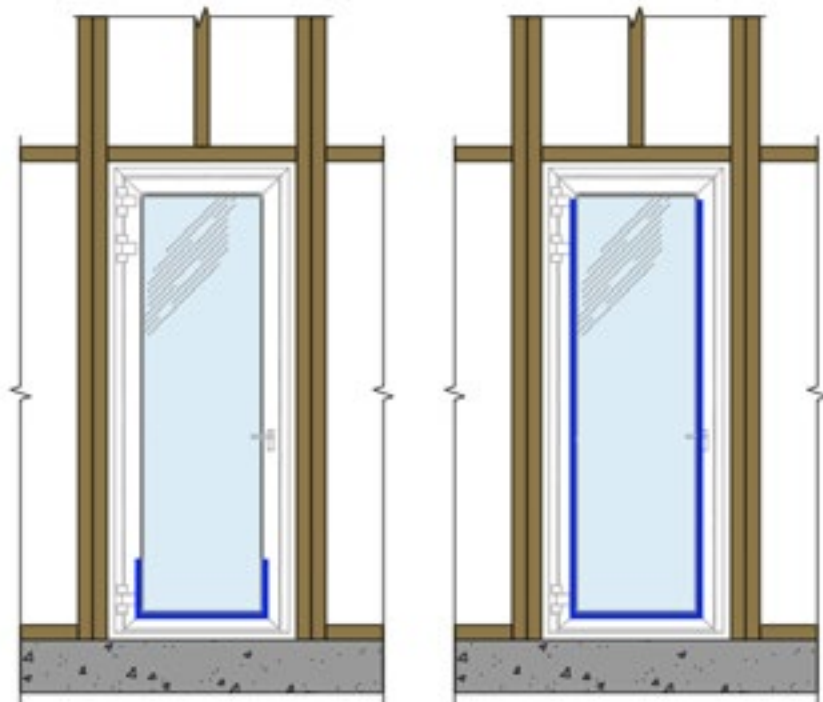


CONTINUED

GLAZE SWING DOORS



- E. Insert the glazing unit into the frame, ensuring it is centered horizontally and vertically.
- F. Apply backer rod and caulking along the interior sill cavity and 12" up both jambs.
- G. For frames exceeding 55 sqft, apply backer rod and caulking along the full height of the jambs.
- H. Never add sealant to the top of the glazing unit.
- I. Reattach the glazing stop to complete the glazing installation.



CONTACT

aeroframe.com
1-877-323-7263

US Office
Suite 110 – 22745 29th Drive SE,
Bothell, WA 98021
USA

Canada Office
Jameson House, 838 W Hastings St #600,
Vancouver, BC V6C 0A6
Canada